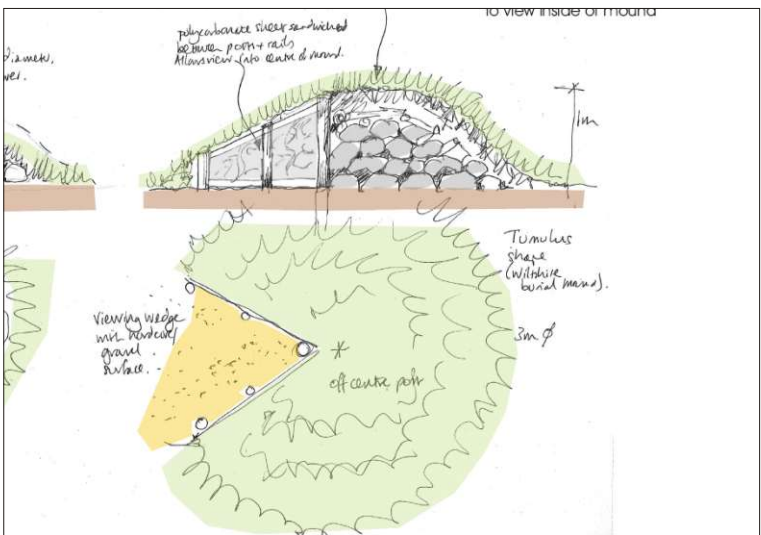


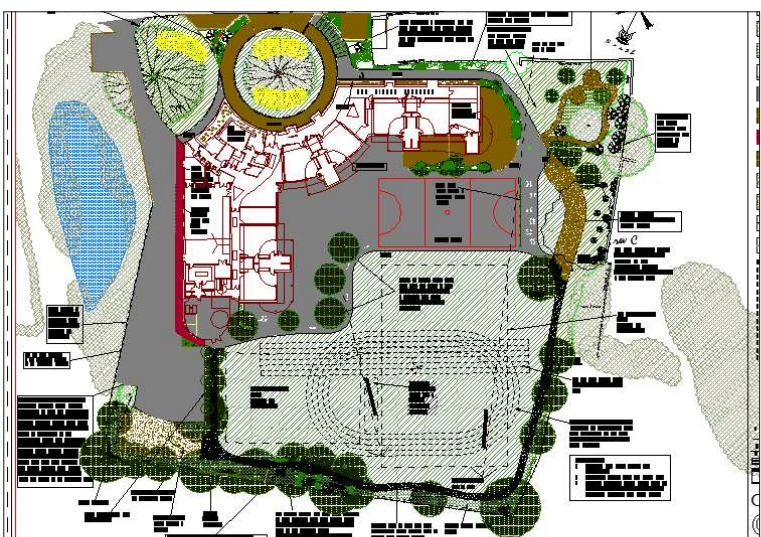
# Design process for Lydiard Millicent Primary School 2009- 2011



Site visit and landscape appraisal. Identify features to be retained and protected, such as trees and wildlife. Constraints and opportunities plan.



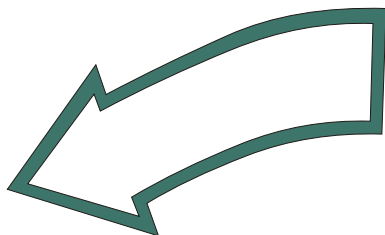
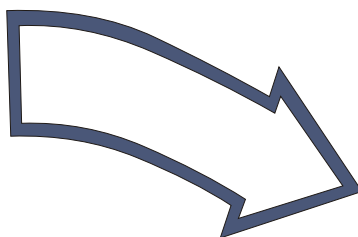
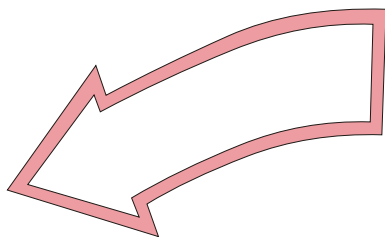
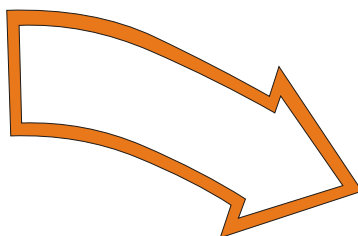
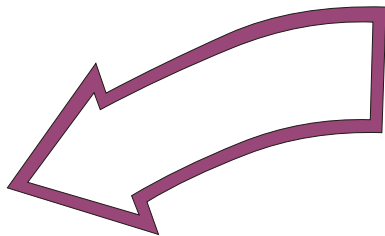
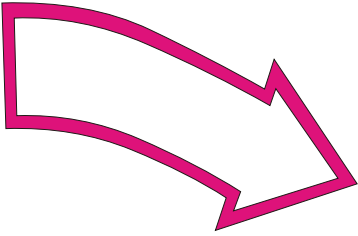
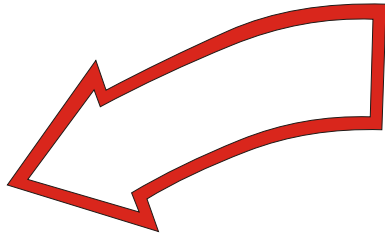
Proposals included habitats for wildlife, a fire pit, woodland gardens, a wildlife hide and allotments. With lots of activities the children won't have time to be bored!



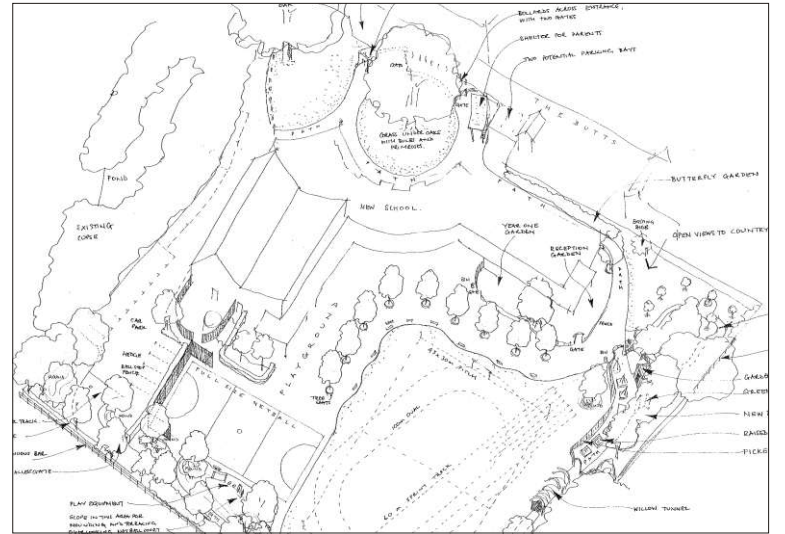
Planning application drawings prepared. These were used for a design and build contract. September 2009



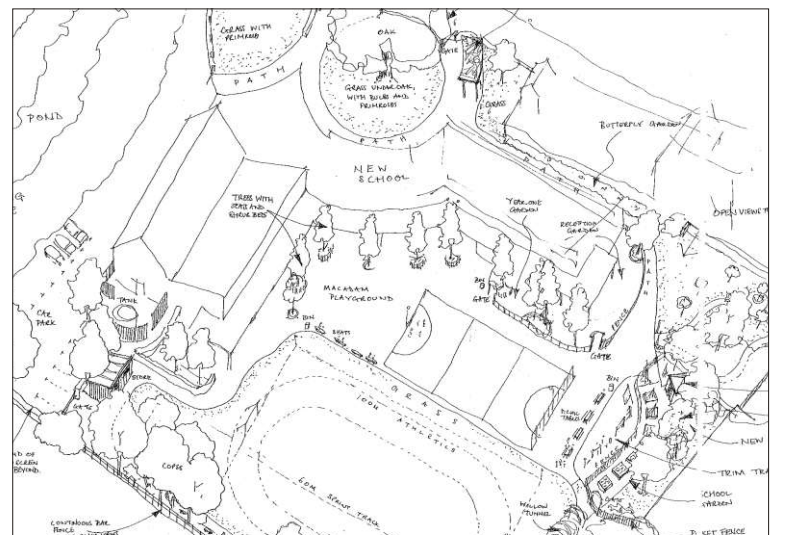
School at completion. September 2011



Brief from school and project manager. Workshop with staff and pupils on school grounds. Key issues are outdoor play and learning and connection to the local landscape. April 2009.



Sketch proposals for school to comment on, including lots of visual sketches and images.



Proposals amended after consultation, with elements moved around. The scheme included accessible paths around the grounds,



Construction of the new school around an old oak tree. Protective fences erected around the tree. October 2010.