

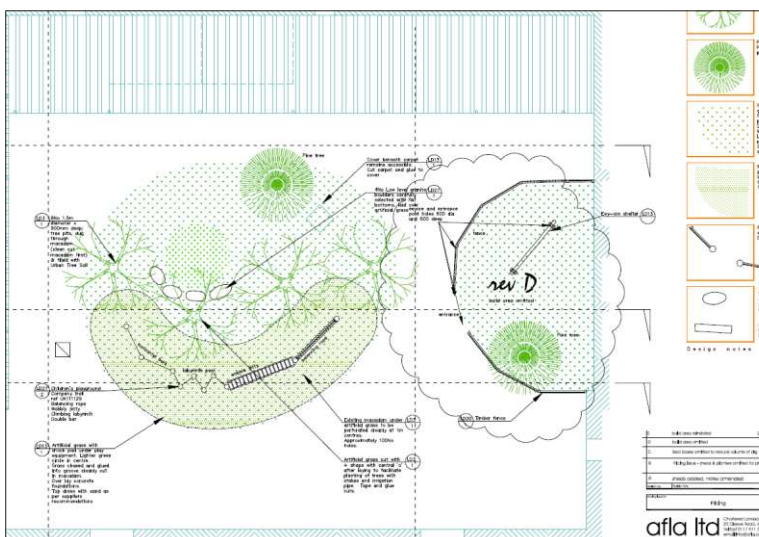
# Design process for Knowle Park Primary School Foundation Playground



Site survey, observation of kids at play, appraisal. Model of site as existing. Discussion of playground with school council. November & December 2010



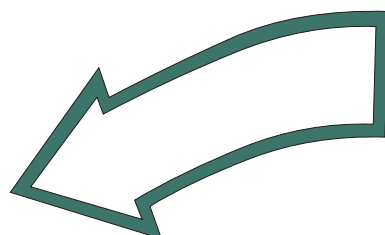
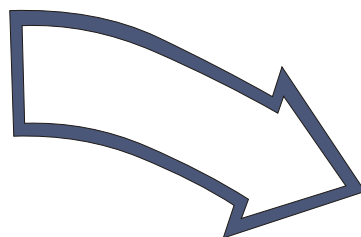
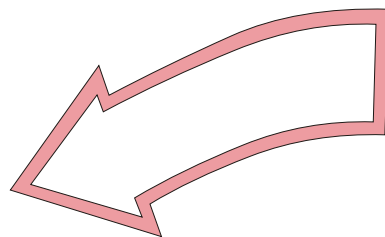
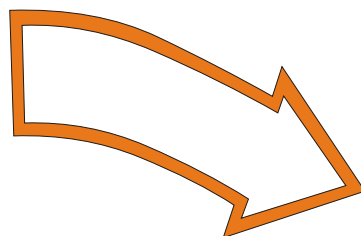
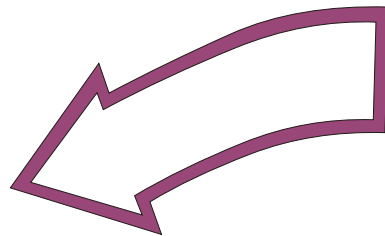
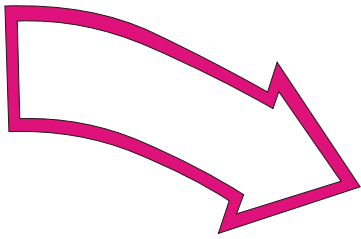
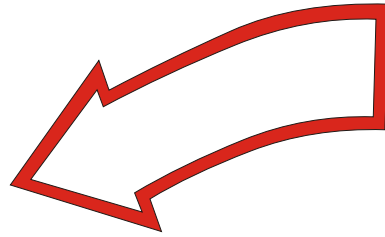
Prepare preferred options with model and cost estimate. Consider best way to build the project, consider different material options. February 2011



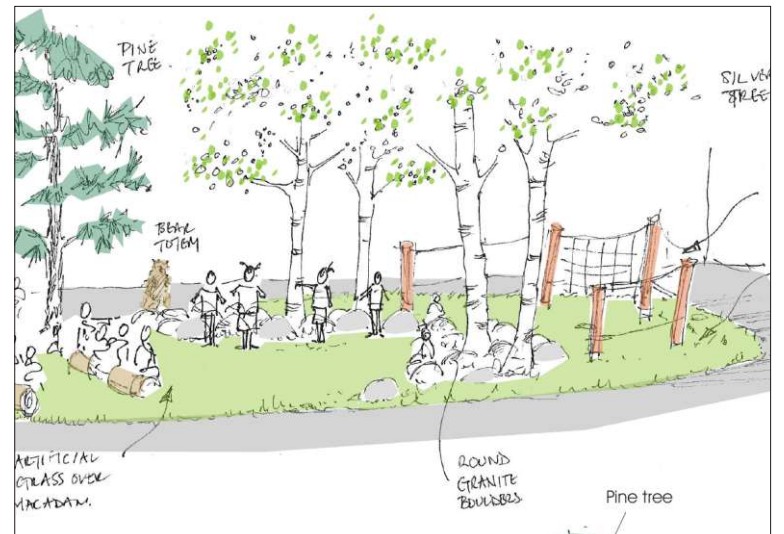
Prepare specification and tender the works. Advanced order of play equipment to ensure delivery on time. Meeting with preferred contractor, confirm access arrangements, programme and costs. May 2011



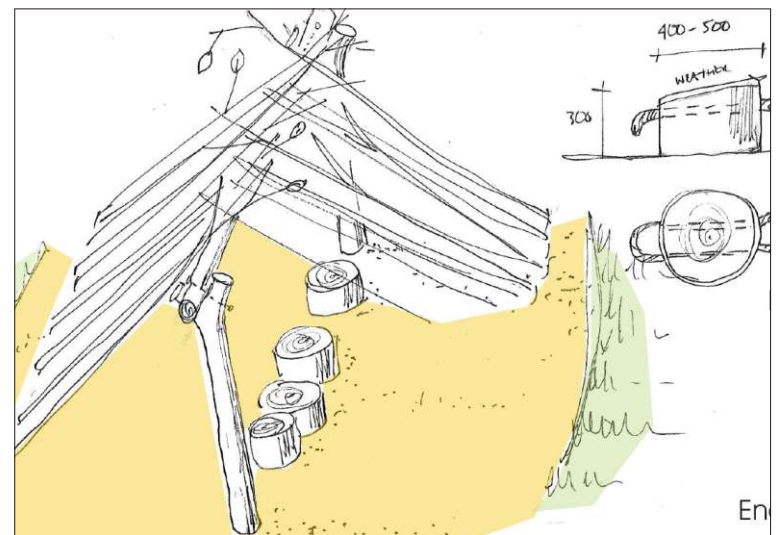
Scheme completed and open for the new term. September 2011



Brief from school outlining play, learning, physical, maintenance and aesthetic requirements. November 2010



Sketch scheme - drawings, sketches, plan and cost options. January 2011



Consult with kids - describe activities in the design, such as build area with a permanent frame but lots of loose parts for children to build with. March 2011



Construct on site - carpets and surfaces protected, workers compound secured, site kept tidy on a daily basis. Appropriate machinery for the job - small enough to drive through the corridors. August 2011