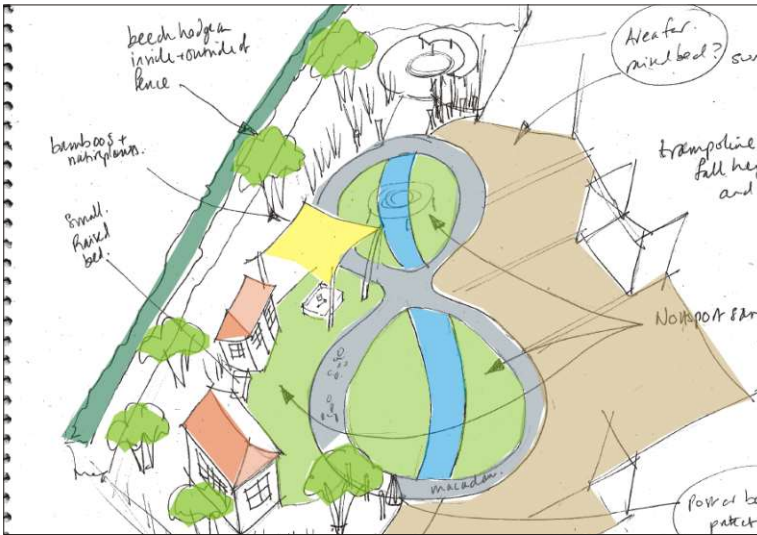


# Design process for Gillingstool & New Siblands Primary Schools 2009-2011



Site appraisal to gauge changes in level and prepare a concept to accommodate the slopes on the site. June 2009



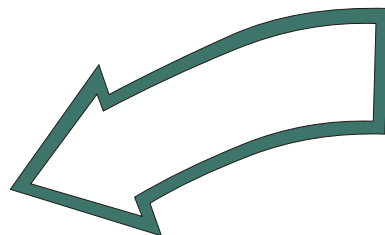
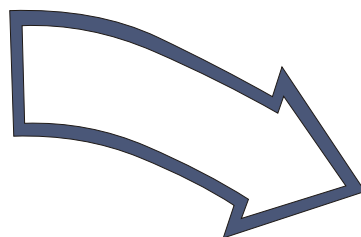
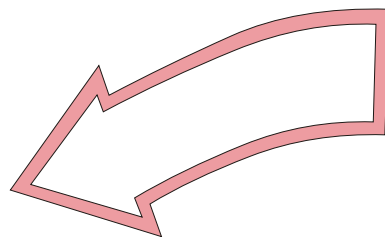
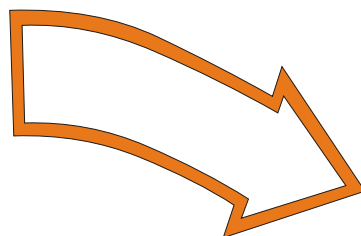
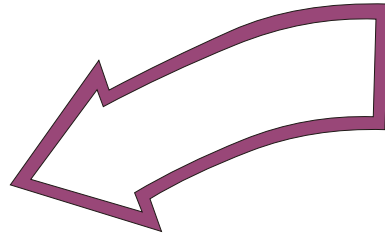
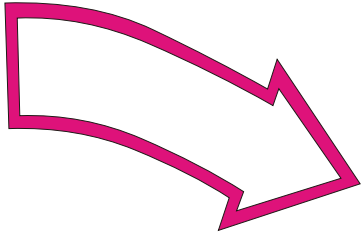
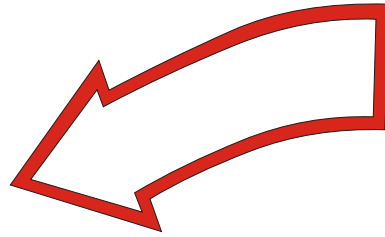
The nursery garden originally had real grass, which would change into a mud bath in such a small space. Artificial grass chosen to provide a clean, soft space and allow the contractor to keep on programme. September 2009



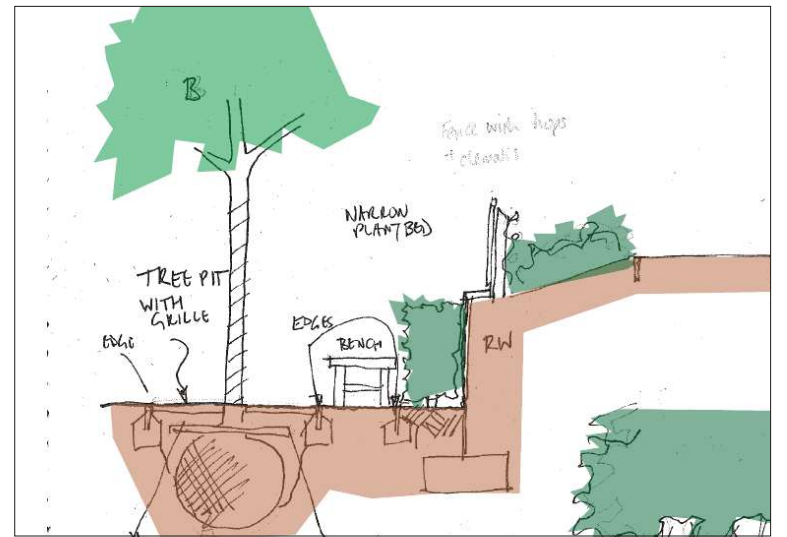
The changes in level were accommodated in a series of slopes, banks and small walls rather than a single big wall. May 2010



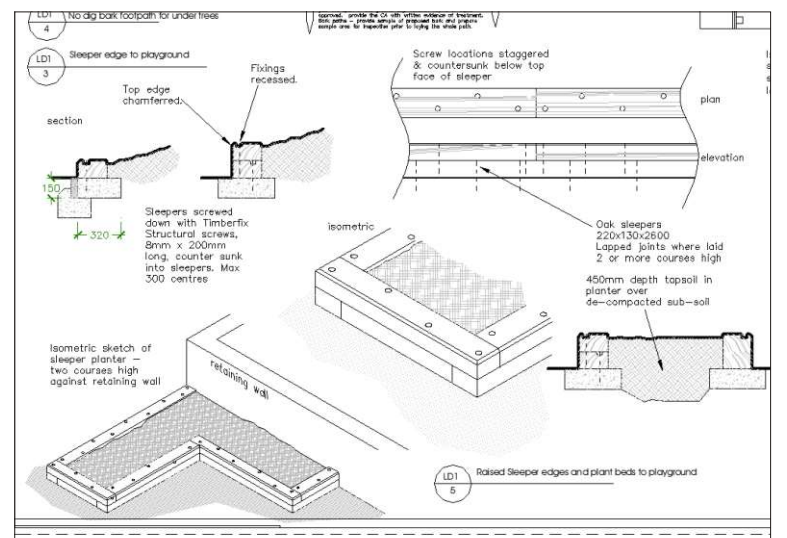
Gillingstool Nursery garden at the end of defects liability - lots of activities for the children. Snags and plant failures identified. September 2011



Appointed Landscape Architect by main contractor Leadbitter Construction Ltd. Brief was to progress existing planning drawings and prepare construction drawings. Design to be reviewed against cost and practicality. Key issue was to design out expensive retaining walls proposed in the original plans.



Quick sketch sections demonstrated that high walls were unnecessary. September 2009



Construction details prepared for the landscape. A large number of proposed trees were omitted as the site has well wooded boundaries. Savings ploughed back into other landscape elements. January 2010



At completion, the New Siblands had a large soft play area with a circuit path and allotment gardens. Autumn 2010