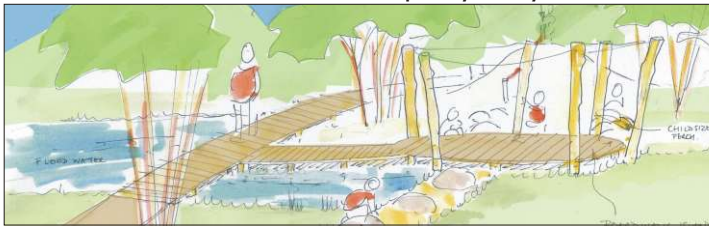
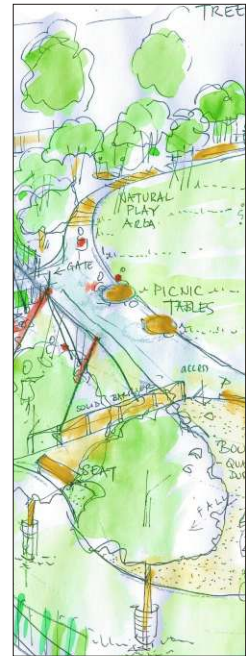


# Natural and accessible play - Byron Rec, Weston-super-Mare: October 2011



Sketch scheme proposals



Byron Rec - completion

chartered  
landscape  
architects

**afla**

## Postcard - Back

In 2008 we were appointed to design and manage improvements to Byron Recreation Ground in Weston-super-Mare. This flat, low-lying open space is surrounded by housing and had few natural assets. Working with local residents, our brief had been to create more natural play opportunities (including informal sports provision for cricket and petanque), as well as equipped play.

With a budget of £140k, the final design uses a variety of timber and steel play equipment centred around a central grass area, enclosed with low key railings which is accessible by gates and a stile. Natural play elements include stepping stones and board walks over a naturally flooding area, a mound (with embankment slide) and timber elements. Native plants have been included for a greener setting. A quarry dust petanque court has been made and is regularly used by local people. There are seats, picnic tables and bins, with a community notice board.

Client: N Somerset CC & South Ward Neighbourhood Management Team

Contractor: Afan Landscapes

QS & CDM Co-ordinator: Hugh Whatley

For further information about this project and our design service, please contact Alex Fraser (Practice Director) on:

t: 0117 971 3558

e: [info@afla.co.uk](mailto:info@afla.co.uk)

w: [www.afla.co.uk](http://www.afla.co.uk)

a: 20 Cleeve Road, Knowle, Bristol BS4 2JP

(October 2011)



**Landscape  
Institute**  
Registered practice